

BioEntry P2

Compact IP Fingerprint Device



Suprema BioEntry P2 is a compact fingerprint access control device featuring Suprema's next generation biometric technology and security platform. BioEntry P2 provides class-leading performance and security by featuring Suprema's latest fingerprint algorithm coupled with powerful 1.0GHz CPU. Packed in a million-type sleek design, BioEntry P2 also provides added flexibility in system design by featuring multi card reading with dual-frequency RFID technology. With its selection of communication interfaces and credential options, BioEntry P2 is a perfect IP access control solution for sites large or small.

suprema
SECURITY & BIOMETRICS

BioEntry P2

Compact IP Fingerprint Device

Features



Best-in-class Performance

- Latest Suprema algorithm
- Fast matching: Max 10,000 match/sec
- Powerful 1.0GHz CPU
- High-precision OP6 optical sensor



Enterprise-level Capacity

- Max. 10,000 users
- Max. 1,000,000 event logs



Multi RFID Card Reading

- LF(125kHz), HF(13.56MHz) dual-band
- Reads all card types including HID multiCLASS (EM/HID Prox/MIFARE/iCLASS/DESFire/FeliCa)



Versatile Interfaces

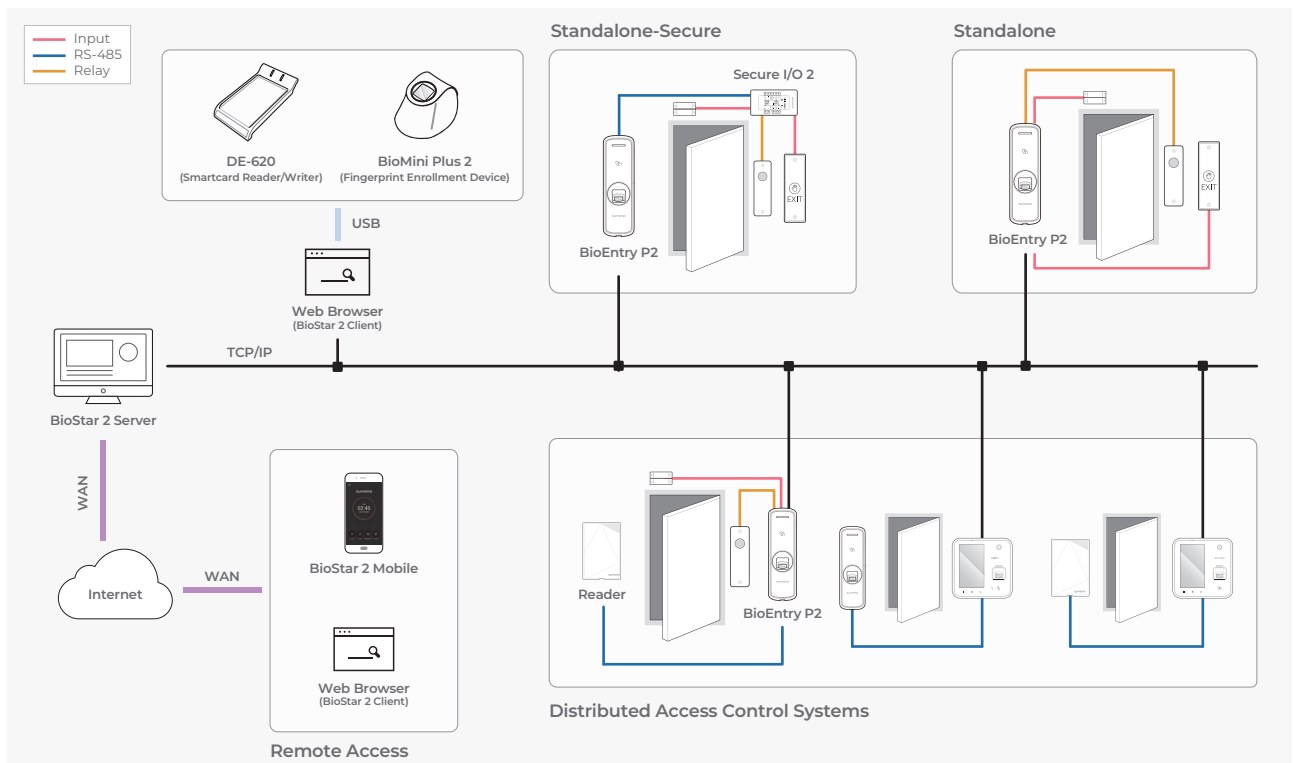
- Communication: TCP/IP, RS-485, Wiegand
- Input/output: TTL I/O, Relay

Specifications

Model Name	BEP2-OD	BEP2-OA
RF Option	125KHz EM & 13.56MHz MIFARE, MIFARE Plus, DESFire, DESFire EV1/EV2/EV3 ⁽¹⁾ , FeliCa	125KHz EM, HID Prox & 13.56MHz MIFARE, MIFARE Plus, DESFire, DESFire EV1/EV2/EV3 ⁽¹⁾ , FeliCa, iCLASS SE/SR/Seos
Biometric	Fingerprint	
Live Fingerprint Detection	Supported (SW-based)	
Sensor Type	Optical Sensor (OP6)	
Template	SUPREMA / ISO19794-2 / ANSI-378	
Extractor	MINEX certified and compliant	
CPU	1.0 GHz	
Memory	8GB Flash + 64 MB RAM	
Crypto Chip	Supported	
Max. User	10,000	
Max. Credential (1:N)	Fingerprint: 10,000	
Max. Credential (1:1)	Fingerprint: 10,000 / Card: 10,000	
Max. Text Log	1,000,000	
LED	Multi-Color	
Sound	Multi-tone Buzzer	
Ethernet	Supported (10/100 Mbps, auto MDI/MDI-X)	
RS-485	1 ch Master / Slave (Selectable)	
RS-485 Communication Protocol	OSDP V2 compliant	
Wiegand	1 ch Input / Output (Selectable)	
TTL Input	2 ch Inputs	
Relay	1 Relay	
Tamper	Supported	
Power	Voltage: 12 Vdc, Current: Max. 0.2 A	
Dimensions (WxHxD)	50.1 x 164 x 38 (mm)	
Certificates	CE, UKCA, KC, FCC, RCM, BIS, ANATEL, RoHS, REACH, WEEE	

(1) DESFire EV2/EV3 cards are supported by having backward compatibility of DESFire EV1 cards. CSN and smart card functions are compatible with BioEntry P2.

System Configurations



Suprema Inc.

17F Parkview Tower, 248, Jeongjail-ro, Bundang-gu, Seongnam-si, Gyeonggi-do, 13554, Republic of Korea
T +82 31 783 4502 **W** www.supremainc.com



For more information visit our website below by scanning the QR code.
<https://www.supremainc.com/en/about/contact-us.asp>